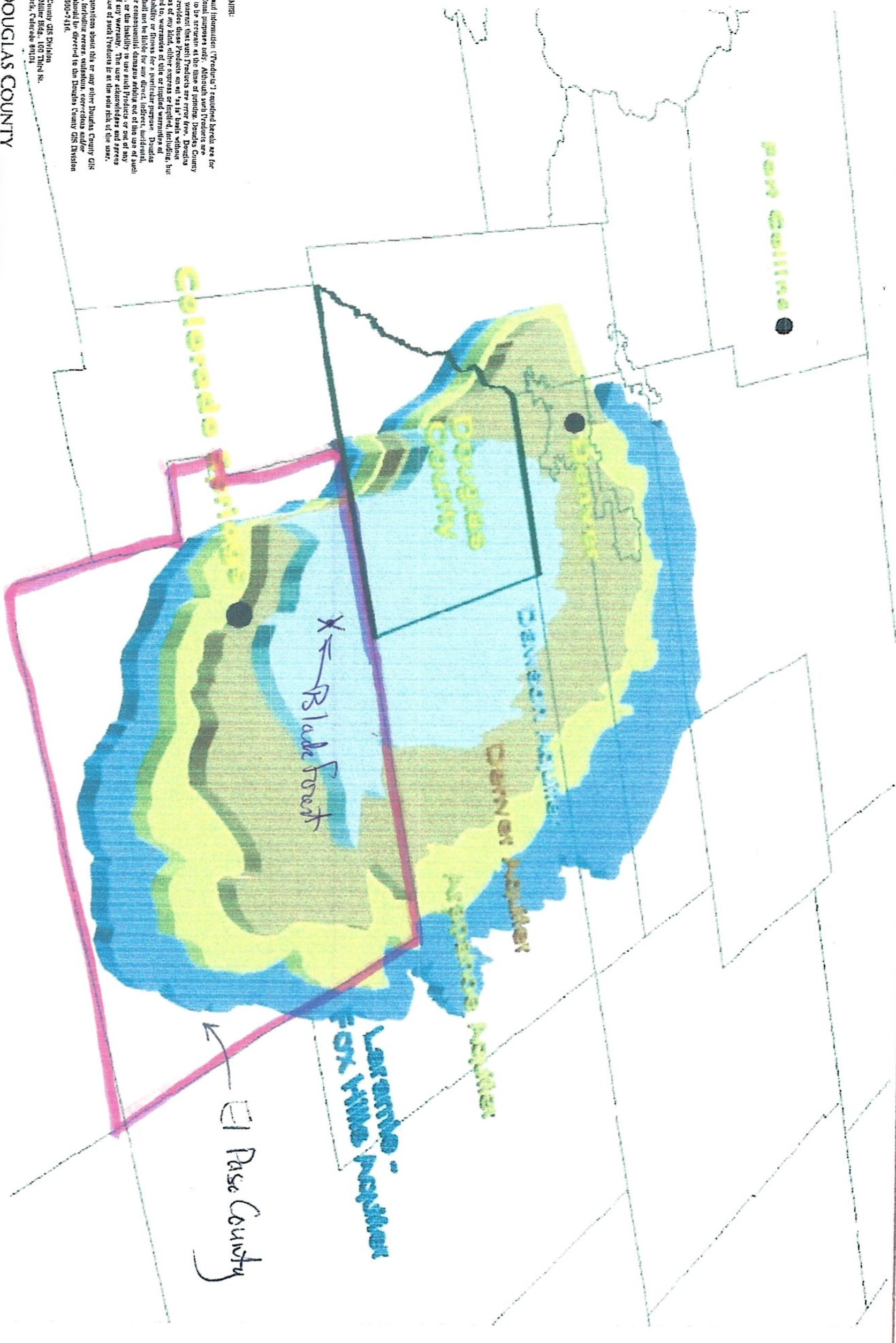


Bedrock Aquifers in the Denver Basin

Map 8.2
Comprehensive Master Plan 2035
Date 2014



DISCLAIMER:

All data and information ("Products") contained herein are for informational purposes only. Although such Products are prepared by or on behalf of the City of Denver, Douglas County does not warrant the accuracy, completeness, or reliability of any data, information, or Products, and Douglas County provides these Products "as is" without any warranty, express or implied, including, but not limited to, warranties of title or implied warranties of merchantability or fitness for a particular purpose. Douglas County shall not be liable for any direct, indirect, incidental, special or consequential damages arising out of the use of such Products or the inability to use such Products or out of any breach of any warranty. The user acknowledges and agrees that the use of such Products is at the user's risk of the user.

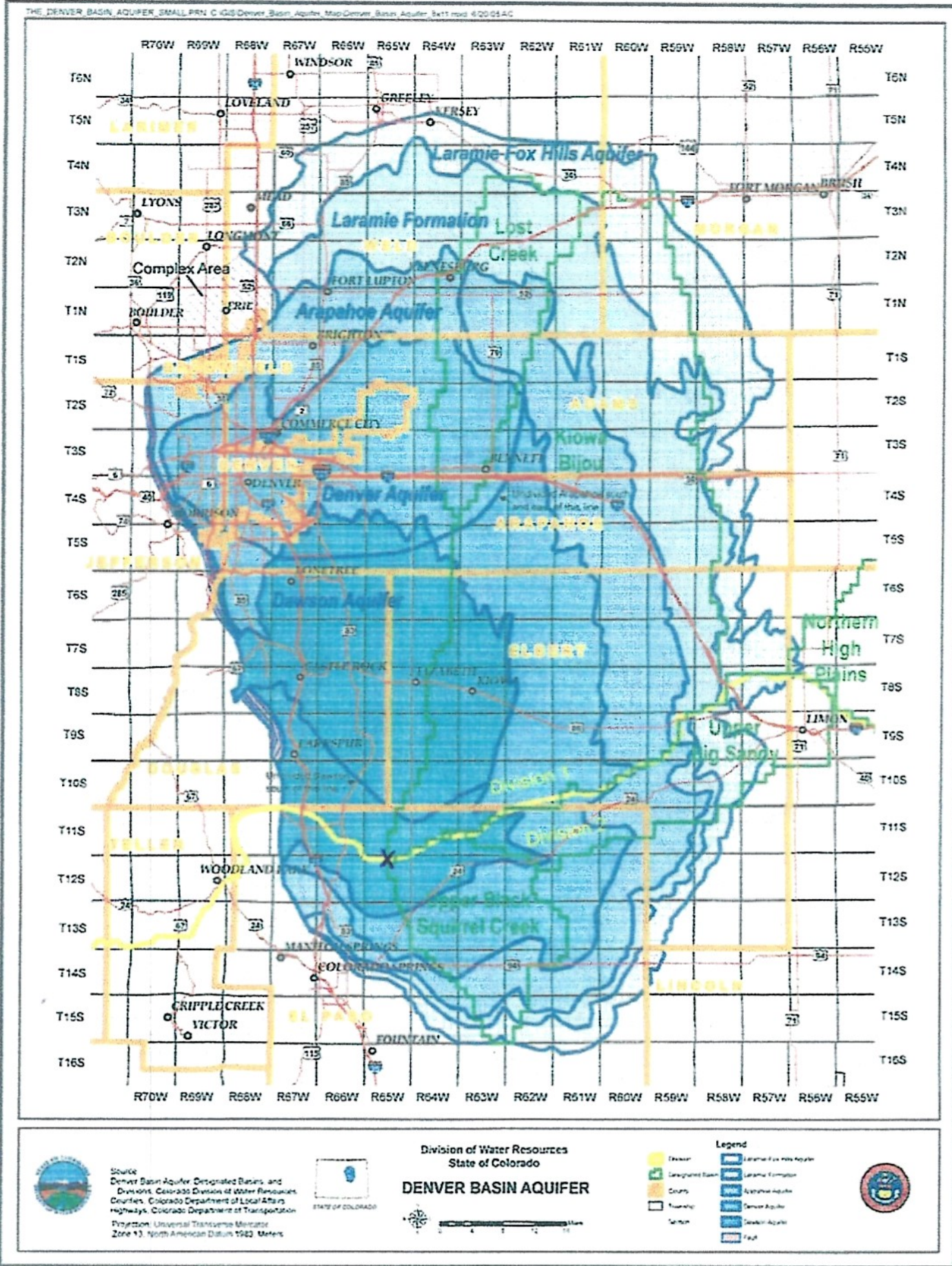
General questions about this or any other Douglas County GIS products, including errors, omissions, corrections and/or updates should be directed to the Douglas County GIS Division at (303) 600-7416.

Douglas County GIS Division
1000 S. Lincoln Blvd., 10th Floor
Centennial, Colorado 80101

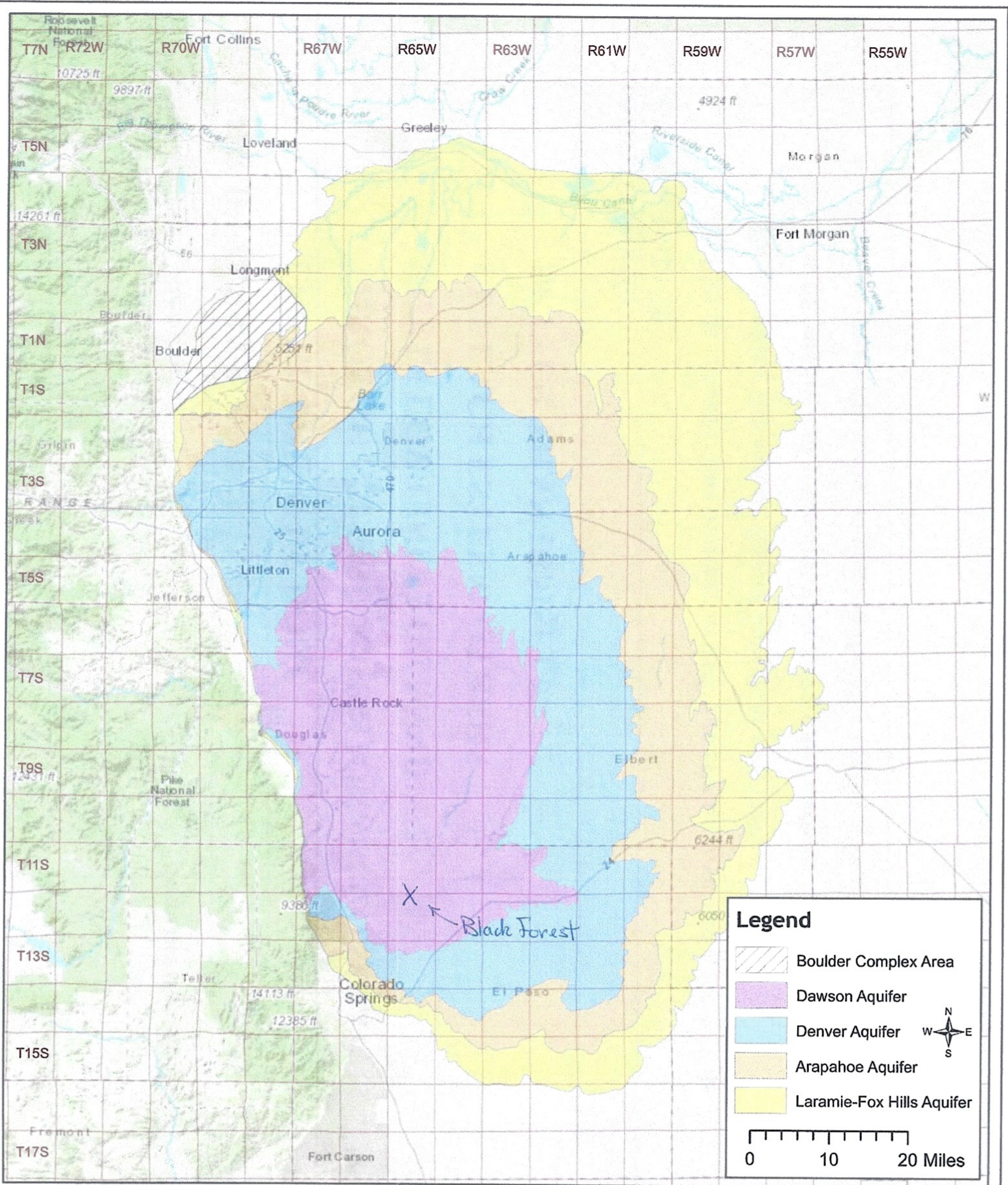
Running on Empty? El Paso County Growth and the Denver Basin

IX. Appendices

Appendix A: Map of the Denver Basin



X- Black Forest



COLORADO
 Division of Water Resources
 Department of Natural Resources

State of Colorado -- Division of Water Resources

Denver Basin Bedrock Aquifers